

MM 住宅

Apartment MM

项目地点：德国，柏林 ✨ Location: Berlin, Germany

项目面积：140 平方米 ✨ Project Size: 140 m²

设计师：Ester Bruzkus, Patrick Batek, ✨ Designer: Ester Bruzkus, Patrick Batek,
Holger Duwe

摄影：Jens Bösenberg ✨ Photographer: Jens Bösenberg

设计公司：Bruzkus Batek Architekten ✨ Design Studio: Bruzkus Batek Architekten



平面布置图
Apartment Plan



本案位于柏林格鲁内瓦尔德区一幢经典风格别墅的首层，Bruzkus Batek Architects 的建筑师通过剔除粉饰灰泥、雕带、银边以及天花板的镶板等所有饰面元素，去繁就简。这么做的另外一个原因是因为这些饰面材料要么已经损坏，要么质量堪忧。

This home is located on the ground floor of a classical villa in the Grunewald district of Berlin. As part of the new design Bruzkus Batek Architects first pared the spaces down to the essence by stripping out all decorative surface elements such as stucco, friezes, trim and coffer —also since these were damaged or in pretty bad condition.

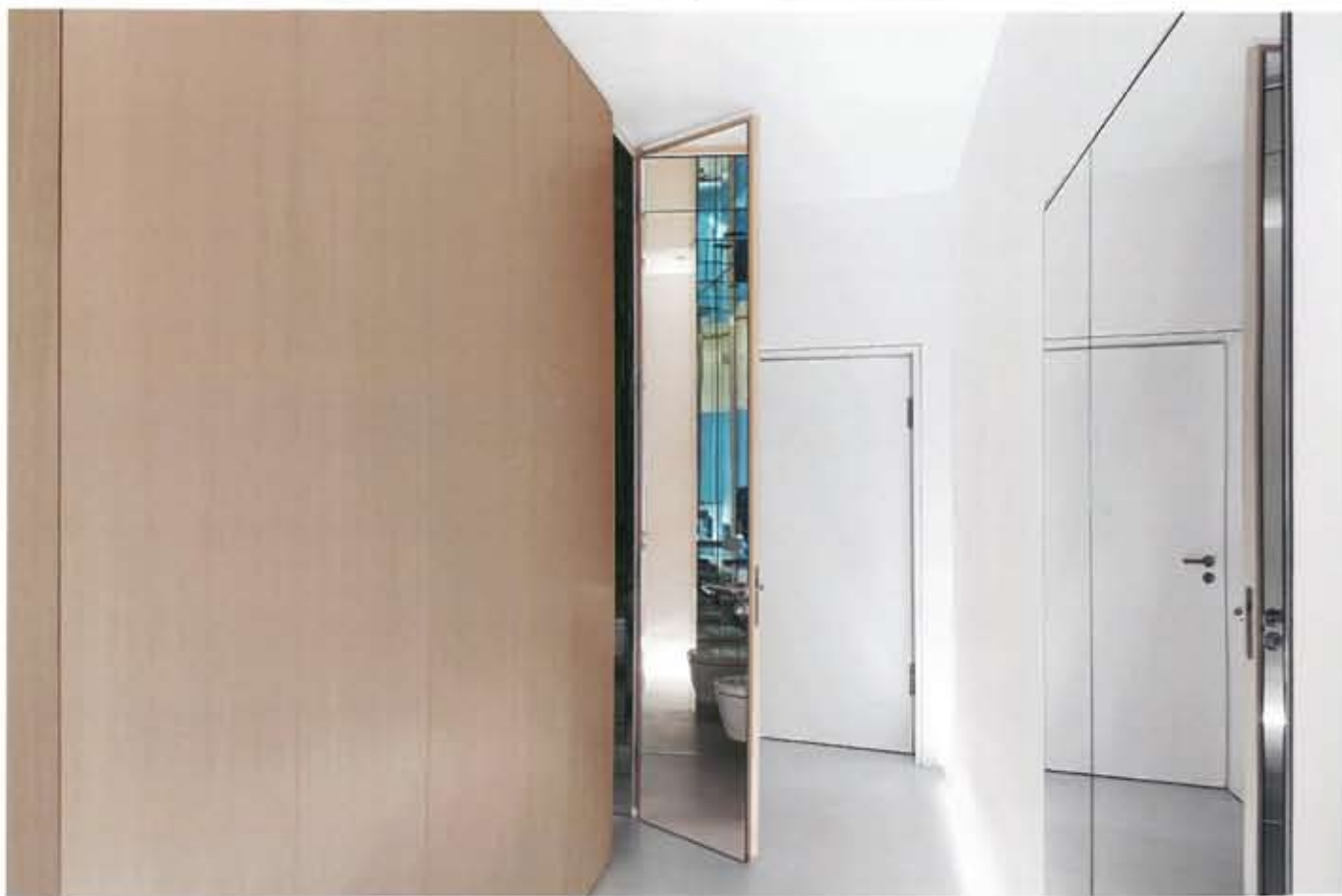
设计后的成果为格调鲜明的画廊式房间，来自 PSLAB 的简约照明理念更是将这种特点凸显出来。家具和陈设犹如展品一般陈列在雪白的墙壁前。灰白色的水泥地搭配着岛式厨房和浴室里的光滑的白蜡木和 Nero Marquina 牌大理石，同时也映衬着客厅的长条凳。

Clear gallery-style rooms are the result, whose character is accentuated by a minimalistic lighting concept from PSLAB. The furniture and fittings are positioned like exhibits in front of the sheer white walls. A pale gray concrete floor is combined with soaped ash and Nero Marquina marble in the kitchen island and the bathroom, as well as for the long bench in the living room.



本案最主要的空间元素当属位置居中的衔接式厨房操作台，其整合式座位还可用作早餐台等。除了将所有的厨房用具藏于视野之外，设计师们还采用了无门把手设计，使设计效果更显简洁。在一体式操作系统的帮助下，轻轻一按即可打开冰箱门。一张大餐桌和一个大理石饰面壁炉与分隔墙一起把厨房与用餐区和客厅分隔开来。

The most dominant spatial element is the central and communicative kitchen block with integrated seating, for example, for breakfast on the go. The clarity of the design is underlined by hiding all ironmongery from sight and by avoiding the use of door handles. Even the fridge door opens simply via gentle pressure—and with the help of an integrated motor. A separating wall divides the kitchen from the dining and living zone with its large dining table and marble-clad fireplace.



卧室与浴室相连，浴室设有直立式的淋浴间，由等高的铝合金框玻璃墙则围成。光滑的铝合金架支撑着定制的韩式盥洗池，而墙壁与内嵌式壁橱则覆盖在白蜡木或大块的制式大理石板之下。

Sleeping and bathroom zones flow one into the other the bath is freestanding and the level-access shower is simply bounded by a chrome-framed glass wall. The custom-built Korean washbasin is mounted on a glossy chrome stand. The walls and built-in cupboards are clad in ash or large format marble slabs.